



Helpu Cymru i leihau
ei Hôl Troed Carbon

Help Wales reduce
its Carbon Footprint



Llywodraeth Cynulliad Cymru
Welsh Assembly Government

**Strategaeth Newid
yn yr Hinsawdd –**

**Ymgynghoriad ar
Raglen Weithredu**

**Climate Change
Strategy –**

**Programme of
Action Consultation**

www.cymru.gov.uk/newidhinsawdd

www.wales.gov.uk/climatechange



www.cymru.gov.uk/newidhinsawdd

www.wales.gov.uk/climatechange



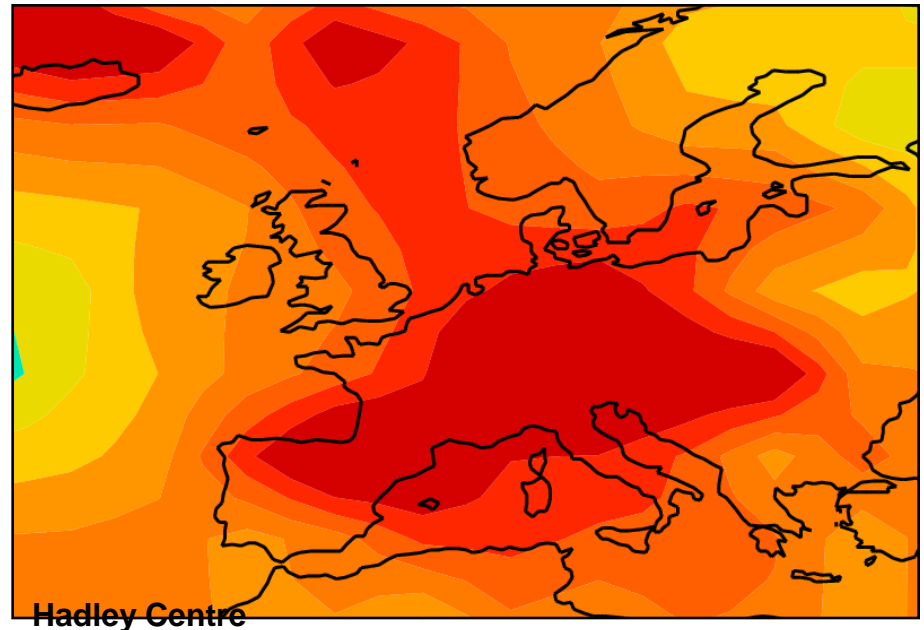
Climate Change: the evidence and the challenge

- Scientific and moral cases for action to tackle climate change are clear.
- UN's Intergovernmental Panel on Climate Change (IPCC) has reported that evidence for climate warming is now “unequivocal”.
- UN Climate Change Research Conference March 2009 - we are currently on the worst-case IPCC emissions trajectories.
- Climate change threatens the basic elements of life for everyone - access to water, food production, health and use of the land and environment.



UK Climate Change projections (UKCP09): The effects in Wales

- Hotter and drier summers
- Increase in extremely warm days
- Milder wetter winters
- Reduction in snowfall and frost
- Increase in frequency of intense rainfall events
- Decrease in groundwater levels
- Increased flooding of low-lying coastal areas



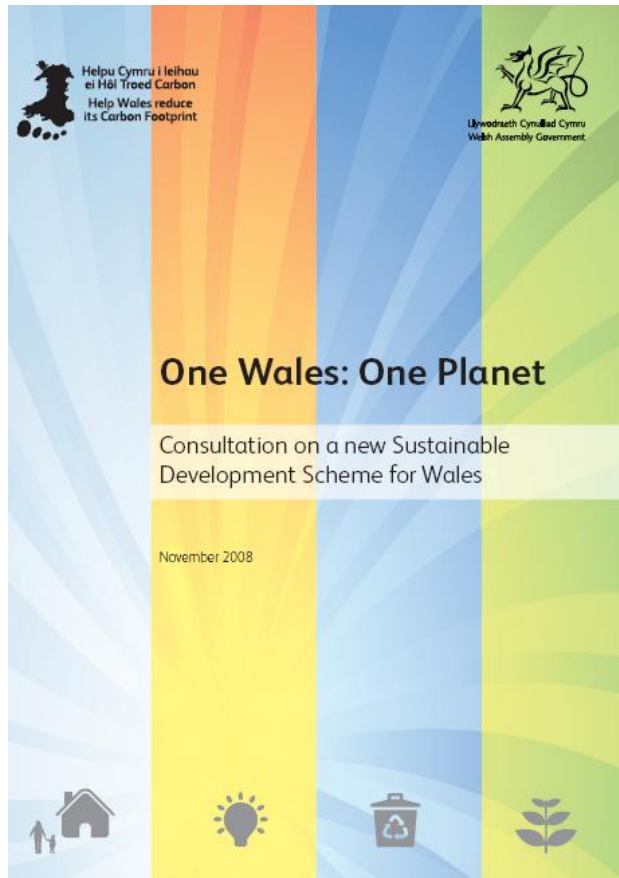
2003 heatwave

www.cymru.gov.uk/newidhinsawdd

www.wales.gov.uk/climatechange



Welsh Assembly Government's targets and commitments



- Strong commitment in ‘One Wales’:
- Aim to achieve carbon reduction-equivalent emissions reductions of 3% per year by 2011 in areas of devolved competence.
- Set specific sectoral targets in relation to residential, public and transport.
- We will work with the heavy industry / power generation industries to reduce emissions
- Also clear involvement in UK, EU and international targets

www.cymru.gov.uk/newidhinsawdd
www.wales.gov.uk/climatechange



Wales' 3% target



Climate change strategy –

High level policy statement
consultation



- Approach set out in *High Level Policy Statement* consultation. In summary:
 - Includes all greenhouse gases
 - Covers all 'direct' emissions (except those from heavy industry and power generation) and electricity consumption emissions
 - Baseline will be an average of emissions in 2006 - 2010 (under review during consultation process)

UK targets

Through the Kyoto Protocol, the UK is committed to reducing its greenhouse emissions by 12.5 per cent over the period 2008 - 2012 against a 1990 baseline

Through the Climate Change Act, it is committed to:

- Reduce greenhouse gas emissions by 80% by 2050 against a 1990 baseline
- To reduction greenhouse gas emissions by at least 34% by 2020 against a 1990 baseline
- To establish, via secondary legislation, carbon budgets, on aggregate greenhouse gas emissions over five year periods



Climate Change Act 2008

CHAPTER 27

CONTENTS

PART 1

CARBON TARGET AND BUDGETING

The target for 2050

- 1 The target for 2050
- 2 Amendment of 2050 target or baseline year
- 3 Consultation on order amending 2050 target or baseline year

Carbon budgeting

- 4 Carbon budgets
- 5 Level of carbon budgets
- 6 Amendment of target percentages
- 7 Consultation on order setting or amending target percentages
- 8 Setting of carbon budgets for budgetary periods
- 9 Consultation on carbon budgets
- 10 Matters to be taken into account in connection with carbon budgets

Limit on use of carbon units

- 11 Limit on use of carbon units

Indicative annual ranges

- 12 Duty to provide indicative annual ranges for net UK carbon account

Proposals and policies for meeting carbon budgets

- 13 Duty to prepare proposals and policies for meeting carbon budgets
- 14 Duty to report on proposals and policies for meeting carbon budgets
- 15 Duty to have regard to need for UK domestic action on climate change

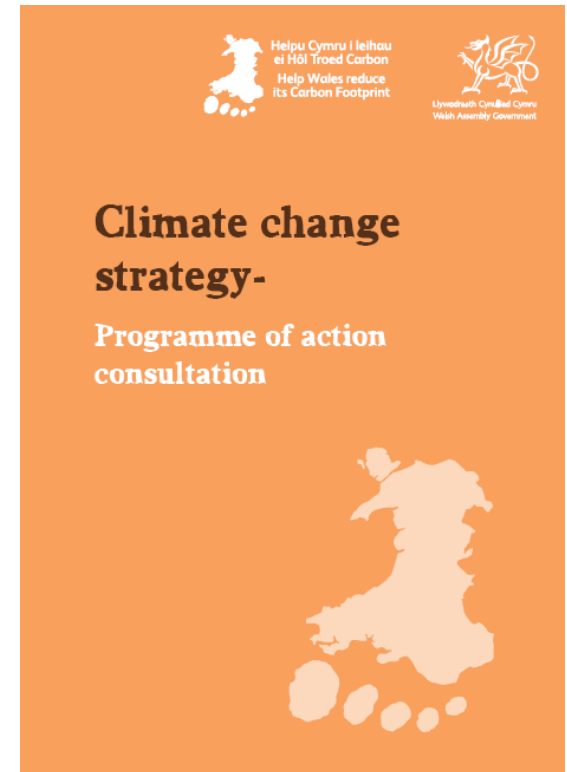
www.cymru.gov.uk/newidhinsawdd
www.wales.gov.uk/climatechange

Climate Change Strategy - Programme of Action

- Programme of Action sets out specific proposals and puts them in the context of UK and EU policy

Based on:

- Responses to first consultation
- Committee on Climate Change Report
- Contributions from Assembly Government Departments
- Reports from Climate Change Commission for Wales Sub Groups
- Other sources including work commissioned by the UK CCC and UK Government Agencies



www.cymru.gov.uk/newidhinsawdd

www.wales.gov.uk/climatechange

Climate Change Strategy - Programme of Action

Programme of Action consultation sets out 23 proposals covering emission reduction in the following sectors:

- Transport
- Business
- Residential
- Waste
- Public
- Agriculture and land management

The consultation also includes proposals supporting behaviour change and climate change adaptation



Climate change strategy-

Programme of action consultation



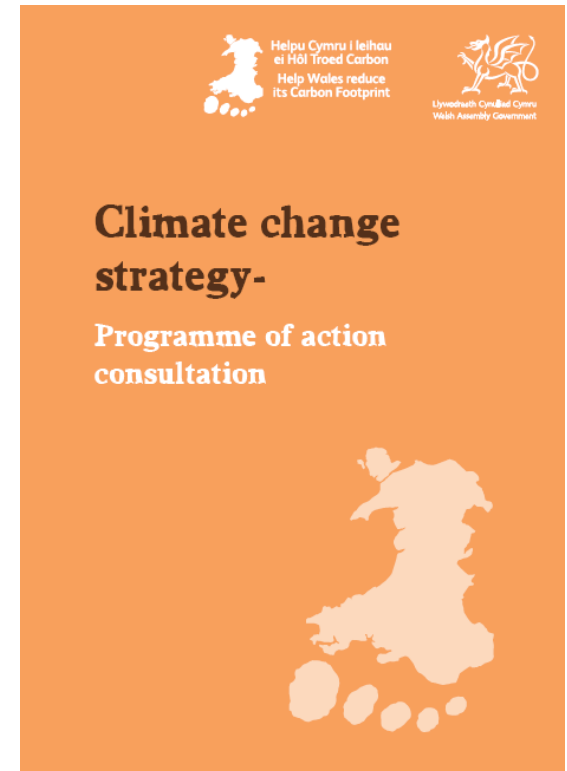
www.cymru.gov.uk/newidhinsawdd
www.wales.gov.uk/climatechange



Climate Change Strategy - Programme of Action

Proposals focus on:

- Helping people to make climate-friendly choices
- Leading by example and building climate change into Assembly Govt decisions
- Improving energy efficiency

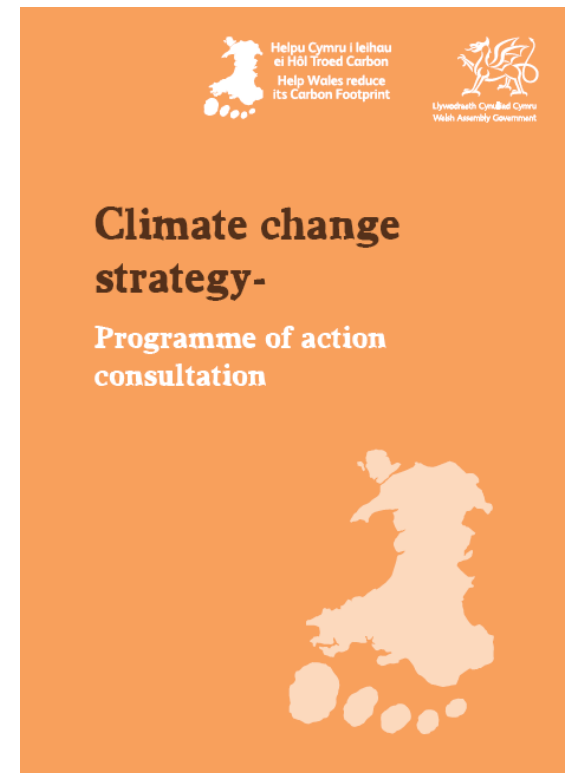


www.cymru.gov.uk/newidhinsawdd

www.wales.gov.uk/climatechange

Climate Change Strategy - Programme of Action

- Identifying where Wales' natural resources, land management pattern and economy can contribute
- Ensuring that our approach means that Wales gains maximum benefit from climate change related business
- Supporting socially just adaptation measures



www.cymru.gov.uk/newidhinsawdd

www.wales.gov.uk/climatechange



Next steps

- Consultation events across Wales
- The consultation closes on 2 October
- Recommendations will be given to Ministers on the consultation findings
- Further work to refine and strengthen the measures post-consultation
- Final Climate Change Strategy:
 - Enable implementation of relevant new measures for 2011
 - Confirm targets
 - Confirm package of actions
 - More information on others' contributions and commitments
 - Information on implementation, including reporting on progress

www.cymru.gov.uk/newidhinsawdd

www.wales.gov.uk/climatechange



Questions?